



GRACE *notes*

GRACE PRESBYTERIAN CHURCH • AUGUST 2025

Grace Presbyterian Church
2401 South 57th Street
Temple, Texas 76504



254.773.2134
gpctemple.org

GPC MISSION MONTH

Everyone is invited during the Sunday School hour to participate in mission service activities. Meet in the fellowship hall from 9:30-10:30AM on August 3, 10, 17 and 24 to participate in specific projects of serving.

- **August 3** - All will fill backpacks with school supplies to support our Backpack Buddies fundraiser that all donated to help students in need
- **August 10** - All will create 'treat bags' that will go with meals that are prepared for *Feed My Sheep*. GPC supports this mission by making sandwich packs and a hot meal. Donations are needed for this mission - please sign up in the narthex!
- **August 17** - Guest speaker, *James Lavender*, from PCHAS will be teaching and providing songs also for kids to perform in worship.
- **August 24** - All are encouraged to wear their 'grubby clothes' to help with designated projects around the church. This may be cleaning children's toys in the nursery, cleaning windows or chalkboards or other specific projects set up for you to assist with.

SERVE WHOLEHEARTEDLY, AS IF YOU WERE
SERVING THE LORD, NOT PEOPLE.

- EPHESIANS 6:7



DID YOU KNOW that Grace Presbyterian Church is becoming known in Central Texas as one of **"THE" places** that supports the **Fine Arts for children and youth** in the area? Grace kindly allows Emily and my piano studio's Fall and Spring recitals to take place in the sanctuary and Fellowship Hall. Church member Jennie Miller and her instrumental private teacher colleagues use the sanctuary for their combined instrumental recitals. The use of Grace by private music instructors in the area is a blessing to the students, their parents or guardians, and we the teachers. Thanks to Grace's generosity the Central Texas Music Teachers Association (CTMTA) hosts the Texas Music Teachers Association (TMTA) state Whitlock Theory Test, the CTMTA Local Performance Contest which leads to pianist competing at the TMTA Regional and State levels, and the CTMTA Spring Festival for piano, voice, and string instruments in the facility. Also, the National Federation of Music Clubs holds the Central Texas Gold Cup Festival at GPC annually. During this past academic year ('24 '25) the total of guests (students, their teachers, parents and guardians) coming through the doors of Grace for music events totaled \$1,083. GPC providing the facility has led to new families visiting our church, children joining the Logos ministry, and most recently attending Handel's Messiah this past December '25. Through the generosity of sharing our church home you are touching lives in a significant way. In appreciation and to encourage future church musicians the GPC

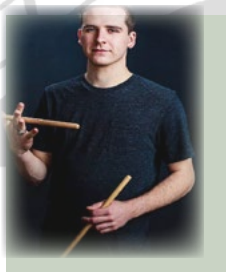
Music Ministry will begin welcoming qualified young musicians from the community to share their music with us in worship. As your church pianist and organist know that we are grateful for your gift of shared space.



--Jonathan Gary, GPC organist

BIG WY'S BRASS BAND

Playing in worship on Sunday, August 3 at 11AM



Band Members: Renuka Jayasinghe, sax; Liam Lord, trumpet; Sam Irvines, trombone; Chase Ozment, drums

CHILDRENS MINISTRY

First Sunday Family Fellowship Lunch - Sunday, August 3 (*following worship*) • We will meet at **Bold Republic Brewing Company** (7070 Stonehollow, Temple) • All families with children and youth are invited to fellowship with other GPC families! 'Dutch' treat

Blessing of the Backpacks is Sunday, August 10 during worship. Students and teach or other adults working in the school system/daycare setting are asked to bring their backpacks to be blessed in worship.

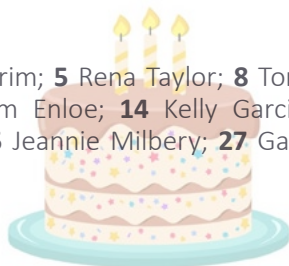
LOGOS begins September 10 thru November 19 (excluding Oct 8) • 5:30-7PM • Kindergarten - 12TH grade students and adult volunteers • K-5TH have a separate program from the youth, however we all eat together at 6PM (Fellowship Hall) • Register online at www.gpctemple.org.

LOGOS Training - Calling all volunteers - we need your help this fall and spring with our LOGOS program on Wednesday nights. This is a once a week commitment on Wednesday nights from 5:30-7PM. Nursery care is available if needed and food is available. If you are interested please email maddiebeadell@gmail.com. Also, plan to attend the LOGOS volunteer training on August 27 from 5:30-6:30PM in the church conference room.

Rally Sunday - Sunday School starts off Sunday, September 7 from 9:30-10:30AM • Celebration in the Fellowship Hall before being dismissed to your Sunday School classe • Bring your favorite pastry to share (*fruit and coffee provided*)

AUGUST BIRTHDAYS

1 Beverly Chilton; **3** Pat Church; **4** Naomi Ingram; **5** Rena Taylor; **8** Tony Owen; **12** Katie Shull; Jennie Miller; **13** Tom Enloe; **14** Kelly Garcia; Elwood; **21** Millie Henn; **23** John Wurster; **25** Jeannie Milbery; **27** Gary Gosney; **30** Donna Bowling



ADMINISTRATION

Church offices will be closed Monday, September 1, 2025 in observance of Labor Day. Regular office hours will resume on Tuesday, September 2, 2025.

MISSIONS

PENNIES FOR MOMS - We invite you to participate in this mission program that will take place the first Sunday of each month. We ask you to place coins in the offering plate to donate to *Hope Mommies*, a faith-based organization which helps bereaved mothers.

SSEM CHAIR FUNDRAISER! South Sudan Education Mission (SSEM) Paul Both, missionary to SSEM, has informed the mission and outreach committee that the SSEM is in need of donations for new classroom chairs. The cost is \$10 per chair. Our goal: 150 chairs! Please prayerfully consider a donation for the classrooms in South Sudan. Donate thru June or when goal is met by indicating on your check SSEM fundraiser. Questions? Contact Sarah Nickerson at 254.624.5610.

MEMBERSHIP

All Church Ice Cream Social! Sunday, August 10 at 5PM in the Fellowship Hall • Let's fellowship before students are off to class! Ice Cream and drinks will be furnished by the Membership Team, and we're asking participants to bring your favorite sweet treats (cookies, pies, cakes, etc) to share.



PRESBYTERIAN WOMEN

Presbyterian Women Study Guides: Guides that have been preordered will be available for pickup when they arrive later this month.

You will pay at time of pickup; cost of currently ordered guides will be \$12, cash or check made out to *Grace Presbyterian Church (GPC)* with **PW Study Guide** on the memo line. *If you are paying with cash, exact amounts will always be appreciated. New Members who haven't yet decided which Bible Study Circle you want to attend, we've got you covered, too. Just call or text Julie Benner (254-228-3252), Patti Smith (254-541-6127), or Pat Wurster (254-760-7732).

MEN OF GRACE

All men are welcome to our Men's Breakfast on Saturday, August 16 at 9AM! The "Men of Grace" meet the 3rd Saturday of each month for breakfast and a speaker in the Fellowship Hall. Bring a friend! Please come and join us and be part of this growing brotherhood. Questions? Email Stan (stanb4simons@gmail.com) or Bob (bshull612@gmail.com).

MEMBER OF THE MONTH

August Member of the Month is Kirk Kirkley! Let's shower him with cards! Mail cards to: c/o Creekside Terrace, 1555 Powell Ave, #519, Belton, TX 76513 Don't have a card? We have one for you in the narthex! Fill it out and drop it in the office and we will mail it for you!

MUSIC MINISTRY

Music Ministry Kick-Off Fall Party/Potluck Wednesday, August 27 from 5:30-7:30PM at the home of Chris and Chelsea Stern (**11381 Parkdale Dr, Temple**) • Please bring a dish, side or dessert to share! We will provide paper goods and drinks. Please dress comfortable - we will have indoor and outdoor seating available. We will sing together! Children welcome or if preferred, childcare will be provided at the church by our childcare staff for babies -5th grade.

Fall Rehearsals begin Wed, September 3

All are welcome! Please email Chelsea and/or Josh if you are considering coming to ring or sing, or if you have any questions. Handbell rehearsals are Wednesdays from 6-7PM and Choir Rehearsals are Wednesdays from 7-8PM

Josh Essary, Director of Handbell Ensemble
joshuaessary@gmail.com

Chelsea Stern, Minister of Music
chelsea@gpctemple.org

